

Return of Organization Exempt From Income Tax

2011

Department of the Treasury
Internal Revenue Service

**Under section 501(c), 527, or 4947(a)(1) of the Internal Revenue Code
(except black lung benefit trust or private foundation)**

**Open to Public
Inspection**

▶ The organization may have to use a copy of this return to satisfy state reporting requirements.

A For the 2011 calendar year, or tax year beginning 9/01, **2011, and ending** 8/31, **2012**

<p>B Check if applicable:</p> <input type="checkbox"/> Address change <input type="checkbox"/> Name change <input type="checkbox"/> Initial return <input type="checkbox"/> Terminated <input type="checkbox"/> Amended return <input type="checkbox"/> Application pending	<p>C</p> <p>MUSICAL BRIDGES AROUND THE WORLD, INC. 7904 SUMMIT CIRCLE SAN ANTONIO, TX 78256</p> <p>F Name and address of principal officer: SAME AS C ABOVE</p>	<p>D Employer Identification Number 74-2891493</p> <p>E Telephone number</p>	<p>G Gross receipts \$ 303,158.</p> <p>H(a) Is this a group return for affiliates? <input type="checkbox"/> Yes <input checked="" type="checkbox"/> No H(b) Are all affiliates included? <input type="checkbox"/> Yes <input type="checkbox"/> No If 'No,' attach a list. (see instructions)</p> <p>H(c) Group exemption number ▶</p>
<p>I Tax-exempt status <input checked="" type="checkbox"/> 501(c)(3) <input type="checkbox"/> 501(c) () ◀ (insert no.) <input type="checkbox"/> 4947(a)(1) or <input type="checkbox"/> 527</p>		<p>J Website: ▶ WWW.MUSICALBRIDGES.ORG</p>	
<p>K Form of organization: <input type="checkbox"/> Corporation <input type="checkbox"/> Trust <input type="checkbox"/> Association <input type="checkbox"/> Other ▶</p>		<p>L Year of Formation: M State of legal domicile:</p>	

Part I Summary

Activities & Governance	<p>1 Briefly describe the organization's mission or most significant activities: <u>PROVIDE HIGH QUALITY MUSICAL PROGRAMS.</u></p> <p>2 Check this box <input type="checkbox"/> if the organization discontinued its operations or disposed of more than 25% of its net assets.</p>		
	<p>3 Number of voting members of the governing body (Part VI, line 1a) 3 11</p> <p>4 Number of independent voting members of the governing body (Part VI, line 1b) 4 10</p> <p>5 Total number of individuals employed in calendar year 2011 (Part V, line 2a) 5 3</p> <p>6 Total number of volunteers (estimate if necessary) 6 0</p> <p>7a Total unrelated business revenue from Part VIII, column (C), line 12 7a 0.</p> <p>b Net unrelated business taxable income from Form 990-T, line 34 7b 0.</p>		
Revenue		Prior Year	Current Year
	8 Contributions and grants (Part VIII, line 1h)	193,095.	192,930.
	9 Program service revenue (Part VIII, line 2g)	48,523.	110,228.
	10 Investment income (Part VIII, column (A), lines 3, 4, and 7d)		
	11 Other revenue (Part VIII, column (A), lines 5, 6d, 8c, 9c, 10c, and 11e)		
	12 Total revenue – add lines 8 through 11 (must equal Part VIII, column (A), line 12)	241,618.	303,158.
Expenses			
	13 Grants and similar amounts paid (Part IX, column (A), lines 1-3)		
	14 Benefits paid to or for members (Part IX, column (A), line 4)		
	15 Salaries, other compensation, employee benefits (Part IX, column (A), lines 5-10)	54,200.	65,621.
	16a Professional fundraising fees (Part IX, column (A), line 11e)		
	b Total fundraising expenses (Part IX, column (D), line 25) ▶ 3,100.		
	17 Other expenses (Part IX, column (A), lines 11a-11d, 11f-24e)	173,174.	216,187.
	18 Total expenses. Add lines 13-17 (must equal Part IX, column (A), line 25)	227,374.	281,808.
	19 Revenue less expenses. Subtract line 18 from line 12	14,244.	21,350.
Net Assets or Fund Balances		Beginning of Current Year	End of Year
	20 Total assets (Part X, line 16)	36,076.	54,922.
	21 Total liabilities (Part X, line 26)	2,504.	0.
	22 Net assets or fund balances. Subtract line 21 from line 20	33,572.	54,922.

Part II Signature Block

Under penalties of perjury, I declare that I have examined this return, including accompanying schedules and statements, and to the best of my knowledge and belief, it is true, correct, and complete. Declaration of preparer (other than officer) is based on all information of which preparer has any knowledge.

Sign Here	<p>Signature of officer ANYA GROKHOVSKI</p>	<p>Date ARTISTIC DIRECTOR</p>	
Paid Preparer Use Only	<p>Print/Type preparer's name JAMES D. ODELL, CPA</p> <p>Firm's name ▶ JAMES D. ODELL, CPA Firm's address ▶ 1850 LOCKHILL SELMA #106 SAN ANTONIO, TX 78213</p>	<p>Preparer's signature Date 3/01/13</p>	<p>Check <input checked="" type="checkbox"/> if self-employed PTIN P00096463 Firm's EIN ▶ 74-2596292 Phone no. (210) 377-0272</p>

May the IRS discuss this return with the preparer shown above? (see instructions) Yes No

Part III Statement of Program Service Accomplishments

Check if Schedule O contains a response to any question in this Part III

1 Briefly describe the organization's mission: PROVIDE HIGH QUALITY MUSICAL PROGRAMS.

2 Did the organization undertake any significant program services during the year which were not listed on the prior Form 990 or 990-EZ? Yes No

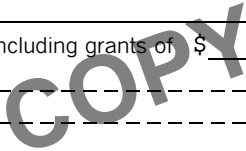
3 Did the organization cease conducting, or make significant changes in how it conducts, any program services? Yes No

4 Describe the organization's program service accomplishments for each of its three largest program services, as measured by expenses.

4a (Code:) (Expenses \$ 245,867. including grants of \$) (Revenue \$) \$114,142 IN DONATED SERVICES AND USE OF FACILITIES NOT INCLUDED BELOW WERE ALSO USED IN CONDUCTING THESE PROGRAMS.

PROVIDE OPPORTUNITIES FOR SHARING OF HIGH QUALITY MUSICAL PROGRAMS.

4b (Code:) (Expenses \$ including grants of \$) (Revenue \$)



4c (Code:) (Expenses \$ including grants of \$) (Revenue \$)

4d Other program services. (Describe in Schedule O.) (Expenses \$ including grants of \$) (Revenue \$)

4e Total program service expenses 245,867.

Part IV Checklist of Required Schedules

	Yes	No
1 Is the organization described in section 501(c)(3) or 4947(a)(1) (other than a private foundation)? <i>If 'Yes,' complete Schedule A.</i>	X	
2 Is the organization required to complete <i>Schedule B, Schedule of Contributors</i> (see instructions)?	X	
3 Did the organization engage in direct or indirect political campaign activities on behalf of or in opposition to candidates for public office? <i>If 'Yes,' complete Schedule C, Part I.</i>		X
4 Section 501(c)(3) organizations. Did the organization engage in lobbying activities, or have a section 501(h) election in effect during the tax year? <i>If 'Yes,' complete Schedule C, Part II.</i>		X
5 Is the organization a section 501(c)(4), 501(c)(5), or 501(c)(6) organization that receives membership dues, assessments, or similar amounts as defined in Revenue Procedure 98-19? <i>If 'Yes,' complete Schedule C, Part III.</i>		X
6 Did the organization maintain any donor advised funds or any similar funds or accounts for which donors have the right to provide advice on the distribution or investment of amounts in such funds or accounts? <i>If 'Yes,' complete Schedule D, Part I.</i>		X
7 Did the organization receive or hold a conservation easement, including easements to preserve open space, the environment, historic land areas or historic structures? <i>If 'Yes,' complete Schedule D, Part II.</i>		X
8 Did the organization maintain collections of works of art, historical treasures, or other similar assets? <i>If 'Yes,' complete Schedule D, Part III.</i>		X
9 Did the organization report an amount in Part X, line 21; serve as a custodian for amounts not listed in Part X; or provide credit counseling, debt management, credit repair, or debt negotiation services? <i>If 'Yes,' complete Schedule D, Part IV.</i>		X
10 Did the organization, directly or through a related organization, hold assets in temporarily restricted endowments, permanent endowments, or quasi-endowments? <i>If 'Yes,' complete Schedule D, Part V.</i>		X
11 If the organization's answer to any of the following questions is 'Yes', then complete Schedule D, Parts VI, VII, VIII, IX, or X as applicable.		
a Did the organization report an amount for land, buildings and equipment in Part X, line 10? <i>If 'Yes,' complete Schedule D, Part VI.</i>	X	
b Did the organization report an amount for investments— other securities in Part X, line 12 that is 5% or more of its total assets reported in Part X, line 16? <i>If 'Yes,' complete Schedule D, Part VII.</i>		X
c Did the organization report an amount for investments— program related in Part X, line 13 that is 5% or more of its total assets reported in Part X, line 16? <i>If 'Yes,' complete Schedule D, Part VIII.</i>		X
d Did the organization report an amount for other assets in Part X, line 15 that is 5% or more of its total assets reported in Part X, line 16? <i>If 'Yes,' complete Schedule D, Part IX.</i>		X
e Did the organization report an amount for other liabilities in Part X, line 25? <i>If 'Yes,' complete Schedule D, Part X.</i>		X
f Did the organization's separate or consolidated financial statements for the tax year include a footnote that addresses the organization's liability for uncertain tax positions under FIN 48 (ASC 740)? <i>If 'Yes,' complete Schedule D, Part X.</i>		X
12a Did the organization obtain separate, independent audited financial statements for the tax year? <i>If 'Yes,' complete Schedule D, Parts XI, XII, and XIII.</i>		X
b Was the organization included in consolidated, independent audited financial statements for the tax year? <i>If 'Yes,' and if the organization answered 'No' to line 12a, then completing Schedule D, Parts XI, XII, and XIII is optional.</i>		X
13 Is the organization a school described in section 170(b)(1)(A)(ii)? <i>If 'Yes,' complete Schedule E.</i>		X
14a Did the organization maintain an office, employees, or agents outside of the United States?		X
b Did the organization have aggregate revenues or expenses of more than \$10,000 from grantmaking, fundraising, business, investment, and program service activities outside the United States, or aggregate foreign investments valued at \$100,000 or more? <i>If 'Yes,' complete Schedule F, Parts I and IV.</i>		X
15 Did the organization report on Part IX, column (A), line 3, more than \$5,000 of grants or assistance to any organization or entity located outside the United States? <i>If 'Yes,' complete Schedule F, Parts II and IV.</i>		X
16 Did the organization report on Part IX, column (A), line 3, more than \$5,000 of aggregate grants or assistance to individuals located outside the United States? <i>If 'Yes,' complete Schedule F, Parts III and IV.</i>		X
17 Did the organization report a total of more than \$15,000 of expenses for professional fundraising services on Part IX, column (A), lines 6 and 11e? <i>If 'Yes,' complete Schedule G, Part I (see instructions).</i>		X
18 Did the organization report more than \$15,000 total of fundraising event gross income and contributions on Part VIII, lines 1c and 8a? <i>If 'Yes,' complete Schedule G, Part II.</i>		X
19 Did the organization report more than \$15,000 of gross income from gaming activities on Part VIII, line 9a? <i>If 'Yes,' complete Schedule G, Part III.</i>		X
20 a Did the organization operate one or more hospital facilities? <i>If 'Yes,' complete Schedule H.</i>		X
b If 'Yes' to line 20a, did the organization attach a copy of its audited financial statements to this return?		

Part IV Checklist of Required Schedules (continued)

	Yes	No
21 Did the organization report more than \$5,000 of grants and other assistance to governments and organizations in the United States on Part IX, column (A), line 1? <i>If 'Yes,' complete Schedule I, Parts I and II.</i>		X
22 Did the organization report more than \$5,000 of grants and other assistance to individuals in the United States on Part IX, column (A), line 2? <i>If 'Yes,' complete Schedule I, Parts I and III.</i>		X
23 Did the organization answer 'Yes' to Part VII, Section A, line 3, 4, or 5 about compensation of the organization's current and former officers, directors, trustees, key employees, and highest compensated employees? <i>If 'Yes,' complete Schedule J.</i>		X
24a Did the organization have a tax-exempt bond issue with an outstanding principal amount of more than \$100,000 as of the last day of the year, and that was issued after December 31, 2002? <i>If 'Yes,' answer lines 24b through 24d and complete Schedule K. If 'No,' go to line 25.</i>		X
24b Did the organization invest any proceeds of tax-exempt bonds beyond a temporary period exception?		
24c Did the organization maintain an escrow account other than a refunding escrow at any time during the year to defease any tax-exempt bonds?		
24d Did the organization act as an 'on behalf of' issuer for bonds outstanding at any time during the year?		
25a Section 501(c)(3) and 501(c)(4) organizations. Did the organization engage in an excess benefit transaction with a disqualified person during the year? <i>If 'Yes,' complete Schedule L, Part I.</i>		X
25b Is the organization aware that it engaged in an excess benefit transaction with a disqualified person in a prior year, and that the transaction has not been reported on any of the organization's prior Forms 990 or 990-EZ? <i>If 'Yes,' complete Schedule L, Part I.</i>		X
26 Was a loan to or by a current or former officer, director, trustee, key employee, highly compensated employee, or disqualified person outstanding as of the end of the organization's tax year? <i>If 'Yes,' complete Schedule L, Part II.</i>		X
27 Did the organization provide a grant or other assistance to an officer, director, trustee, key employee, substantial contributor or employee thereof, a grant selection committee member, or to a 35% controlled entity or family member of any of these persons? <i>If 'Yes,' complete Schedule L, Part III.</i>		X
28 Was the organization a party to a business transaction with one of the following parties (see Schedule L, Part IV instructions for applicable filing thresholds, conditions, and exceptions):		
28a A current or former officer, director, trustee, or key employee? <i>If 'Yes,' complete Schedule L, Part IV.</i>		X
28b A family member of a current or former officer, director, trustee, or key employee? <i>If 'Yes,' complete Schedule L, Part IV.</i>		X
28c An entity of which a current or former officer, director, trustee, or key employee (or a family member thereof) was an officer, director, trustee, or direct or indirect owner? <i>If 'Yes,' complete Schedule L, Part IV.</i>		X
29 Did the organization receive more than \$25,000 in non-cash contributions? <i>If 'Yes,' complete Schedule M.</i>		X
30 Did the organization receive contributions of art, historical treasures, or other similar assets, or qualified conservation contributions? <i>If 'Yes,' complete Schedule M.</i>		X
31 Did the organization liquidate, terminate, or dissolve and cease operations? <i>If 'Yes,' complete Schedule N, Part I.</i>		X
32 Did the organization sell, exchange, dispose of, or transfer more than 25% of its net assets? <i>If 'Yes,' complete Schedule N, Part II.</i>		X
33 Did the organization own 100% of an entity disregarded as separate from the organization under Regulations sections 301.7701-2 and 301.7701-3? <i>If 'Yes,' complete Schedule R, Part I.</i>		X
34 Was the organization related to any tax-exempt or taxable entity? <i>If 'Yes,' complete Schedule R, Parts II, III, IV, and V, line 1.</i>		X
35a Did the organization have a controlled entity within the meaning of section 512(b)(13)?		X
35b Did the organization receive any payment from or engage in any transaction with a controlled entity within the meaning of section 512(b)(13)? <i>If 'Yes,' complete Schedule R, Part V, line 2.</i>		X
36 Section 501(c)(3) organizations. Did the organization make any transfers to an exempt non-charitable related organization? <i>If 'Yes,' complete Schedule R, Part V, line 2.</i>		X
37 Did the organization conduct more than 5% of its activities through an entity that is not a related organization and that is treated as a partnership for federal income tax purposes? <i>If 'Yes,' complete Schedule R, Part VI.</i>		X
38 Did the organization complete Schedule O and provide explanations in Schedule O for Part VI, lines 11 and 19? Note. All Form 990 filers are required to complete Schedule O.		X

BAA

Form 990 (2011)

Part V Statements Regarding Other IRS Filings and Tax Compliance

Check if Schedule O contains a response to any question in this Part V.

		Yes	No
1 a	Enter the number reported in Box 3 of Form 1096. Enter -0- if not applicable. 28		
1 b	Enter the number of Forms W-2G included in line 1a. Enter -0- if not applicable. 0		
1 c	Did the organization comply with backup withholding rules for reportable payments to vendors and reportable gaming (gambling) winnings to prize winners?		X
2 a	Enter the number of employees reported on Form W-3, Transmittal of Wage and Tax Statements, filed for the calendar year ending with or within the year covered by this return. 3		
2 b	If at least one is reported on line 2a, did the organization file all required federal employment tax returns? Note. If the sum of lines 1a and 2a is greater than 250, you may be required to e-file. (see instructions)	X	
3 a	Did the organization have unrelated business gross income of \$1,000 or more during the year?		X
3 b	If 'Yes' has it filed a Form 990-T for this year? If 'No,' provide an explanation in Schedule O.		
4 a	At any time during the calendar year, did the organization have an interest in, or a signature or other authority over, a financial account in a foreign country (such as a bank account, securities account, or other financial account)?		X
4 b	If 'Yes,' enter the name of the foreign country: See instructions for filing requirements for Form TD F 90-22.1, Report of Foreign Bank and Financial Accounts.		
5 a	Was the organization a party to a prohibited tax shelter transaction at any time during the tax year?		X
5 b	Did any taxable party notify the organization that it was or is a party to a prohibited tax shelter transaction?		X
5 c	If 'Yes,' to line 5a or 5b, did the organization file Form 8886-T?		
6 a	Does the organization have annual gross receipts that are normally greater than \$100,000, and did the organization solicit any contributions that were not tax deductible?		X
6 b	If 'Yes,' did the organization include with every solicitation an express statement that such contributions or gifts were not tax deductible?		
7	Organizations that may receive deductible contributions under section 170(c).		
7 a	Did the organization receive a payment in excess of \$75 made partly as a contribution and partly for goods and services provided to the payor?		X
7 b	If 'Yes,' did the organization notify the donor of the value of the goods or services provided?		
7 c	Did the organization sell, exchange, or otherwise dispose of tangible personal property for which it was required to file Form 8282?		X
7 d	If 'Yes,' indicate the number of Forms 8282 filed during the year. 		
7 e	Did the organization receive any funds, directly or indirectly, to pay premiums on a personal benefit contract?		X
7 f	Did the organization, during the year, pay premiums, directly or indirectly, on a personal benefit contract?		X
7 g	If the organization received a contribution of qualified intellectual property, did the organization file Form 8899 as required?		
7 h	If the organization received a contribution of cars, boats, airplanes, or other vehicles, did the organization file a Form 1098-C?		
8	Sponsoring organizations maintaining donor advised funds and section 509(a)(3) supporting organizations. Did the supporting organization, or a donor advised fund maintained by a sponsoring organization, have excess business holdings at any time during the year?		
9	Sponsoring organizations maintaining donor advised funds.		
9 a	Did the organization make any taxable distributions under section 4966?		
9 b	Did the organization make a distribution to a donor, donor advisor, or related person?		
10	Section 501(c)(7) organizations. Enter:		
10 a	Initiation fees and capital contributions included on Part VIII, line 12. 		
10 b	Gross receipts, included on Form 990, Part VIII, line 12, for public use of club facilities. 		
11	Section 501(c)(12) organizations. Enter:		
11 a	Gross income from members or shareholders. 		
11 b	Gross income from other sources (Do not net amounts due or paid to other sources against amounts due or received from them.) 		
12 a	Section 4947(a)(1) non-exempt charitable trusts. Is the organization filing Form 990 in lieu of Form 1041? 		
12 b	If 'Yes,' enter the amount of tax-exempt interest received or accrued during the year. 		
13	Section 501(c)(29) qualified nonprofit health insurance issuers.		
13 a	Is the organization licensed to issue qualified health plans in more than one state? Note. See the instructions for additional information the organization must report on Schedule O.		
13 b	Enter the amount of reserves the organization is required to maintain by the states in which the organization is licensed to issue qualified health plans. 		
13 c	Enter the amount of reserves on hand. 		
14 a	Did the organization receive any payments for indoor tanning services during the tax year?		X
14 b	If 'Yes,' has it filed a Form 720 to report these payments? If 'No,' provide an explanation in Schedule O.		

Part VI Governance, Management and Disclosure For each 'Yes' response to lines 2 through 7b below, and for a 'No' response to line 8a, 8b, or 10b below, describe the circumstances, processes, or changes in Schedule O. See instructions.

Check if Schedule O contains a response to any question in this Part VI

Section A. Governing Body and Management

		Yes	No
1 a	Enter the number of voting members of the governing body at the end of the tax year. 1 a 11 If there are material differences in voting rights among members of the governing body, or if the governing body delegated broad authority to an executive committee or similar committee, explain in Schedule O.		
b	Enter the number of voting members included in line 1a, above, who are independent. 1 b 10		
2	Did any officer, director, trustee, or key employee have a family relationship or a business relationship with any other officer, director, trustee or key employee?		X
3	Did the organization delegate control over management duties customarily performed by or under the direct supervision of officers, directors or trustees, or key employees to a management company or other person?		X
4	Did the organization make any significant changes to its governing documents since the prior Form 990 was filed?		X
5	Did the organization become aware during the year of a significant diversion of the organization's assets?		X
6	Did the organization have members or stockholders? SEE SCHEDULE O	X	
7 a	Did the organization have members, stockholders, or other persons who had the power to elect or appoint one or more members of the governing body?		X
b	Are any governance decisions of the organization reserved to (or subject to approval by) members, stockholders, or other persons other than the governing body?		X
8	Did the organization contemporaneously document the meetings held or written actions undertaken during the year by the following: SEE SCHEDULE O		
a	The governing body?	X	
b	Each committee with authority to act on behalf of the governing body?		X
9	Is there any officer, director or trustee, or key employee listed in Part VII, Section A, who cannot be reached at the organization's mailing address? If 'Yes,' provide the names and addresses in Schedule O.		X

Section B. Policies (This Section B requests information about policies not required by the Internal Revenue Code.)

		Yes	No
10 a	Did the organization have local chapters, branches, or affiliates?		X
b	If 'Yes,' did the organization have written policies and procedures governing the activities of such chapters, affiliates, and branches to ensure their operations are consistent with the organization's exempt purposes?		
11 a	Has the organization provided a complete copy of this Form 990 to all members of its governing body before filing the form?	X	
b	Describe in Schedule O the process, if any, used by the organization to review this Form 990. SEE SCHEDULE O		
12 a	Did the organization have a written conflict of interest policy? If 'No,' go to line 13.	X	
b	Were officers, directors or trustees, and key employees required to disclose annually interests that could give rise to conflicts?	X	
c	Did the organization regularly and consistently monitor and enforce compliance with the policy? If 'Yes,' describe in Schedule O how this is done SEE SCHEDULE O	X	
13	Did the organization have a written whistleblower policy?	X	
14	Did the organization have a written document retention and destruction policy?		X
15	Did the process for determining compensation of the following persons include a review and approval by independent persons, comparability data, and contemporaneous substantiation of the deliberation and decision?		
a	The organization's CEO, Executive Director, or top management official. SEE SCHEDULE O	X	
b	Other officers of key employees of the organization. If 'Yes' to line 15a or 15b, describe the process in Schedule O. (See instructions.)		X
16 a	Did the organization invest in, contribute assets to, or participate in a joint venture or similar arrangement with a taxable entity during the year?		X
b	If 'Yes,' did the organization follow a written policy or procedure requiring the organization to evaluate its participation in joint venture arrangements under applicable federal tax law, and taken steps to safeguard the organization's exempt status with respect to such arrangements?		

Section C. Disclosure

- 17** List the states with which a copy of this Form 990 is required to be filed ▶ NONE
- 18** Section 6104 requires an organization to make its Forms 1023 (or 1024 if applicable), 990, and 990-T (501(c)(3)s only) available for public inspection. Indicate how you make these available. Check all that apply.
 Own website Another's website Upon request
- 19** Describe in Schedule O whether (and if so, how) the organization makes its governing documents, conflict of interest policy, and financial statements available to the public during the tax year. **SEE SCHEDULE O**
- 20** State the name, physical address, and telephone number of the person who possesses the books and records of the organization:
 ▶ ANYA GROKHOVSKI 7904 SUMMIT CIRCLE SAN ANTONIO TX 78256 (210) 725-1137

Part VII Compensation of Officers, Directors, Trustees, Key Employees, Highest Compensated Employees, and Independent Contractors

Check if Schedule O contains a response to any question in this Part VII.

Section A. Officers, Directors, Trustees, Key Employees, and Highest Compensated Employees

1 a Complete this table for all persons required to be listed. Report compensation for the calendar year ending with or within the organization's tax year.

- List all of the organization's **current** officers, directors, trustees (whether individuals or organizations), regardless of amount of compensation. Enter -0- in columns (D), (E), and (F) if no compensation was paid.
- List all of the organization's **current** key employees, if any. See instructions for definition of 'key employee.'
- List the organization's five **current** highest compensated employees (other than an officer, director, trustee, or key employee) who received reportable compensation (Box 5 of Form W-2 and/or Box 7 of Form 1099-MISC) of more than \$100,000 from the organization and any related organizations.
- List all of the organization's **former** officers, key employees, and highest compensated employees who received more than \$100,000 of reportable compensation from the organization and any related organizations.
- List all of the organization's **former directors or trustees** that received, in the capacity as a former director or trustee of the organization, more than \$10,000 of reportable compensation from the organization and any related organizations.

List persons in the following order: individual trustees or directors; institutional trustees; officers; key employees; highest compensated employees; and former such persons.

Check this box if neither the organization nor any related organization compensated any current officer, director, or trustee.

(A) Name and title	(B) Average hours per week (describe hours for related organizations in Schedule O)	(C) Position (do not check more than one box, unless person is both an officer and a director/trustee)						(D) Reportable compensation from the organization (W-2/1099-MISC)	(E) Reportable compensation from related organizations (W-2/1099-MISC)	(F) Estimated amount of other compensation from the organization and related organizations
		Individual trustee or director	Institutional trustee	Officer	Key employee	Highest compensated employee	Former			
(1) SUHAIL ARASTU DIRECTOR	0						0.	0.	0.	
(2) JUDY CRABB TREASURER	0						0.	0.	0.	
(3) YURI D BORSHCH, MD DIRECTOR	0						0.	0.	0.	
(4) ALBA M DIAZ DIRECTOR	0						0.	0.	0.	
(5) CALEB GONZALEZ DIRECTOR	0						0.	0.	0.	
(6) LUIS RAMOS, MD DIRECTOR	0						0.	0.	0.	
(7) ERIC MILLER, MD CHAIRMAN	0						0.	0.	0.	
(8) ROBERT B. LECKIE, JD SECRETARY	0						0.	0.	0.	
(9) AWILDA I RAMOS, MD DIRECTOR	0						0.	0.	0.	
(10) SUSAN C FRANKLIN DIRECTOR	0						0.	0.	0.	
(11) ANYA GROKHOVSKI ARTISTIC DIRECT	40	X		X			37,666.	0.	0.	
(12)										
(13)										
(14)										

COPY

Part VII Section A. Officers, Directors, Trustees, Key Employees, and Highest Compensated Employees (cont)

(A) Name and title	(B) Average hours per week (describe hours for related organizations in Sch O)	(C) Position (do not check more than one box, unless person is both an officer and a director/trustee)					(D) Reportable compensation from the organization (W-2/1099-MISC)	(E) Reportable compensation from related organizations (W-2/1099-MISC)	(F) Estimated amount of other compensation from the organization and related organizations
		Individual trustee or director	Institutional trustee	Officer	Key employee	Highest compensated employee			
(15) -----									
(16) -----									
(17) -----									
(18) -----									
(19) -----									
(20) -----									
(21) -----									
(22) -----									
(23) -----									
(24) -----									
(25) -----									

COPY

1 b Sub-total	37,666.	0.	0.
c Total from continuation sheets to Part VII, Section A	0.	0.	0.
d Total (add lines 1b and 1c)	37,666.	0.	0.

2 Total number of individuals (including but not limited to those listed above) who received more than \$100,000 of reportable compensation from the organization ▶ 0

	Yes	No
3 Did the organization list any former officer, director or trustee, key employee, or highest compensated employee on line 1a? <i>If 'Yes,' complete Schedule J for such individual.</i>	3	X
4 For any individual listed on line 1a, is the sum of reportable compensation and other compensation from the organization and related organizations greater than \$150,000? <i>If 'Yes' complete Schedule J for such individual.</i>	4	X
5 Did any person listed on line 1a receive or accrue compensation from any unrelated organization or individual for services rendered to the organization? <i>If 'Yes,' complete Schedule J for such person.</i>	5	X

Section B. Independent Contractors

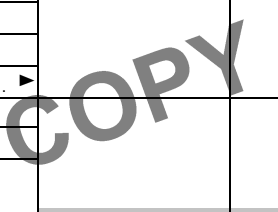
1 Complete this table for your five highest compensated independent contractors that received more than \$100,000 of compensation from the organization. Report compensation for the calendar year ending with or within the organization's tax year.

(A) Name and business address	(B) Description of services	(C) Compensation

2 Total number of independent contractors (including but not limited to those listed above) who received more than \$100,000 in compensation from the organization ▶ 0

Part VIII Statement of Revenue

		(A) Total revenue	(B) Related or exempt function revenue	(C) Unrelated business revenue	(D) Revenue excluded from tax under sections 512, 513, or 514	
CONTRIBUTIONS, GIFTS, GRANTS AND OTHER SIMILAR AMOUNTS	1 a Federated campaigns	1 a				
	b Membership dues	1 b				
	c Fundraising events	1 c				
	d Related organizations	1 d				
	e Government grants (contributions)	1 e 139,763.				
	f All other contributions, gifts, grants, and similar amounts not included above	1 f 53,167.				
	g Noncash contributions included in lns 1a-1f: \$					
h Total. Add lines 1a-1f		192,930.				
PROGRAM SERVICE REVENUE	Business Code					
	2 a MEMBERSHIP DUES & ASSESSMENTS		41,905.	41,905.		
	b SPECIAL EVENTS		38,628.	38,628.		
	c TICKET SALES		24,695.	24,695.		
	d AD SALES		5,000.	5,000.		
	e _____					
	f All other program service revenue					
g Total. Add lines 2a-2f		110,228.				
OTHER REVENUE	3 Investment income (including dividends, interest and other similar amounts)					
	4 Income from investment of tax-exempt bond proceeds					
	5 Royalties					
	6 a Gross rents	(i) Real				
		(ii) Personal				
		b Less: rental expenses				
		c Rental income or (loss)				
	d Net rental income or (loss)					
	7 a Gross amount from sales of assets other than inventory	(i) Securities				
		(ii) Other				
		b Less: cost or other basis and sales expenses				
		c Gain or (loss)				
	d Net gain or (loss)					
	8 a Gross income from fundraising events (not including \$ _____ of contributions reported on line 1c). See Part IV, line 18	a				
		b Less: direct expenses	b			
		c Net income or (loss) from fundraising events				
	9 a Gross income from gaming activities. See Part IV, line 19	a				
b Less: direct expenses		b				
c Net income or (loss) from gaming activities						
10 a Gross sales of inventory, less returns and allowances	a					
	b Less: cost of goods sold	b				
	c Net income or (loss) from sales of inventory					
Miscellaneous Revenue		Business Code				
11 a _____						
	b _____					
	c _____					
	d All other revenue					
e Total. Add lines 11a-11d						
12 Total revenue. See instructions		303,158.	110,228.	0.	0.	



Part IX Statement of Functional Expenses

Section 501(c)(3) and 501(c)(4) organizations must complete all columns.

All other organizations must complete column (A) but are not required to complete columns (B), (C), and (D).

Check if Schedule O contains a response to any question in this Part IX. X

Do not include amounts reported on lines 6b, 7b, 8b, 9b, and 10b of Part VIII.	(A) Total expenses	(B) Program service expenses	(C) Management and general expenses	(D) Fundraising expenses
1 Grants and other assistance to governments and organizations in the United States. See Part IV, line 21.				
2 Grants and other assistance to individuals in the United States. See Part IV, line 22.				
3 Grants and other assistance to governments, organizations, and individuals outside the United States. See Part IV, lines 15 and 16.				
4 Benefits paid to or for members.				
5 Compensation of current officers, directors, trustees, and key employees.	37,666.	30,133.	7,533.	0.
6 Compensation not included above, to disqualified persons (as defined under section 4958(f)(1)) and persons described in section 4958(c)(3)(B).	0.	0.	0.	0.
7 Other salaries and wages.	24,420.	19,536.	4,884.	
8 Pension plan accruals and contributions (include section 401(k) and section 403(b) employer contributions).				
9 Other employee benefits.				
10 Payroll taxes.	3,535.	2,828.	707.	
11 Fees for services (non-employees):				
a Management				
b Legal				
c Accounting	8,239.		8,239.	
d Lobbying				
e Professional fundraising services. See Part IV, line 17.				
f Investment management fees				
g Other				
12 Advertising and promotion	4,842.	4,842.		
13 Office expenses	6,933.	5,541.	1,392.	
14 Information technology				
15 Royalties				
16 Occupancy				
17 Travel	33,495.	32,795.		700.
18 Payments of travel or entertainment expenses for any federal, state, or local public officials				
19 Conferences, conventions, and meetings				
20 Interest				
21 Payments to affiliates				
22 Depreciation, depletion, and amortization	2,634.	2,107.	527.	
23 Insurance	389.	389.		
24 Other expenses. Itemize expenses not covered above (List miscellaneous expenses in line 24e. If line 24e amount exceeds 10% of line 25, column (A) amount, list line 24e expenses on Schedule O.)				
a ARTISTIC FEES	79,057.	79,057.		
b CATERING	18,191.	18,191.		
c RECORDING ENGINEER	11,100.	11,100.		
d VENUE RENTAL	9,421.	9,421.		
e All other expenses...SEE SCH. O	41,886.	29,927.	9,559.	2,400.
25 Total functional expenses. Add lines 1 through 24e.	281,808.	245,867.	32,841.	3,100.
26 Joint costs. Complete this line only if the organization reported in column (B) joint costs from a combined educational campaign and fundraising solicitation. Check here <input type="checkbox"/> if following SOP 98-2 (ASC 958-720).				

Part X Balance Sheet

		(A)		(B)		
		Beginning of year		End of year		
ASSETS	1	Cash — non-interest-bearing	27,923.	1	49,403.	
	2	Savings and temporary cash investments		2		
	3	Pledges and grants receivable, net		3		
	4	Accounts receivable, net		4		
	5	Receivables from current and former officers, directors, trustees, key employees, and highest compensated employees. Complete Part II of Schedule L		5		
	6	Receivables from other disqualified persons (as defined under section 4958(f)(1)), persons described in section 4958(c)(3)(B), and contributing employers and sponsoring organizations of section 501(c)(9) voluntary employees' beneficiary organizations (see instructions)		6		
	7	Notes and loans receivable, net		7		
	8	Inventories for sale or use		8		
	9	Prepaid expenses and deferred charges		9		
	10a	Land, buildings, and equipment: cost or other basis. Complete Part VI of Schedule D	10a	20,770.		
	b	Less: accumulated depreciation	10b	15,251.	10c	5,519.
	11	Investments — publicly traded securities			11	
	12	Investments — other securities. See Part IV, line 11			12	
	13	Investments — program-related. See Part IV, line 11			13	
	14	Intangible assets			14	
	15	Other assets. See Part IV, line 11			15	
16	Total assets. Add lines 1 through 15 (must equal line 34)		36,076.	16	54,922.	
LIABILITIES	17	Accounts payable and accrued expenses	2,504.	17		
	18	Grants payable		18		
	19	Deferred revenue		19		
	20	Tax-exempt bond liabilities		20		
	21	Escrow or custodial account liability. Complete Part IV of Schedule D		21		
	22	Payables to current and former officers, directors, trustees, key employees, highest compensated employees, and disqualified persons. Complete Part II of Schedule L		22		
	23	Secured mortgages and notes payable to unrelated third parties		23		
	24	Unsecured notes and loans payable to unrelated third parties		24		
	25	Other liabilities (including federal income tax, payables to related third parties, and other liabilities not included on lines 17-24). Complete Part X of Schedule D		25		
	26	Total liabilities. Add lines 17 through 25		2,504.	26	0.
NET ASSETS OR FUND BALANCES	Organizations that follow SFAS 117, check here <input checked="" type="checkbox"/> and complete lines 27 through 29 and lines 33 and 34.					
	27	Unrestricted net assets	33,572.	27	54,922.	
	28	Temporarily restricted net assets		28		
	29	Permanently restricted net assets		29		
	Organizations that do not follow SFAS 117, check here <input type="checkbox"/> and complete lines 30 through 34.					
	30	Capital stock or trust principal, or current funds		30		
	31	Paid-in or capital surplus, or land, building, or equipment fund		31		
	32	Retained earnings, endowment, accumulated income, or other funds		32		
33	Total net assets or fund balances.		33,572.	33	54,922.	
34	Total liabilities and net assets/fund balances.		36,076.	34	54,922.	

BAA

Form 990 (2011)

Part XI Reconciliation of Net Assets

Check if Schedule O contains a response to any question in this Part XI.

1	Total revenue (must equal Part VIII, column (A), line 12)	1	303,158.
2	Total expenses (must equal Part IX, column (A), line 25)	2	281,808.
3	Revenue less expenses. Subtract line 2 from line 1	3	21,350.
4	Net assets or fund balances at beginning of year (must equal Part X, line 33, column (A))	4	33,572.
5	Other changes in net assets or fund balances (explain in Schedule O)	5	0.
6	Net assets or fund balances at end of year. Combine lines 3, 4, and 5 (must equal Part X, line 33, column (B))	6	54,922.

Part XII Financial Statements and Reporting

Check if Schedule O contains a response to any question in this Part XII.

		Yes	No
1	Accounting method used to prepare the Form 990: <input type="checkbox"/> Cash <input checked="" type="checkbox"/> Accrual <input type="checkbox"/> Other _____ If the organization changed its method of accounting from a prior year or checked 'Other,' explain in Schedule O.		
2a	Were the organization's financial statements compiled or reviewed by an independent accountant?		X
2b	Were the organization's financial statements audited by an independent accountant?	X	
2c	If 'Yes' to line 2a or 2b, does the organization have a committee that assumes responsibility for oversight of the audit, review, or compilation of its financial statements and selection of an independent accountant? If the organization changed either its oversight process or selection process during the tax year, explain in Schedule O.		X
d	If 'Yes' to line 2a or 2b, check a box below to indicate whether the financial statements for the year were issued on a separate basis, consolidated basis, or both: <input type="checkbox"/> Separate basis <input type="checkbox"/> Consolidated basis <input type="checkbox"/> Both consolidated and separate basis		
3a	As a result of a federal award, was the organization required to undergo an audit or audits as set forth in the Single Audit Act and OMB Circular A-133?		X
3b	If 'Yes,' did the organization undergo the required audit or audits? If the organization did not undergo the required audit or audits, explain why in Schedule O and describe any steps taken to undergo such audits.		

BAA

Form 990 (2011)

COPY

SCHEDULE A
(Form 990 or 990-EZ)

Department of the Treasury
Internal Revenue Service

Public Charity Status and Public Support

Complete if the organization is a section 501(c)(3) organization or a section 4947(a)(1) nonexempt charitable trust.

▶ Attach to Form 990 or Form 990-EZ. ▶ See separate instructions.

OMB No. 1545-0047

2011

Open to Public Inspection

Name of the organization MUSICAL BRIDGES AROUND THE WORLD, INC.	Employer identification number 74-2891493
---	---

Part I Reason for Public Charity Status (All organizations must complete this part.) See instructions.

The organization is not a private foundation because it is: (For lines 1 through 11, check only one box.)

- 1 A church, convention of churches or association of churches described in **section 170(b)(1)(A)(i)**.
- 2 A school described in **section 170(b)(1)(A)(ii)**. (Attach Schedule E.)
- 3 A hospital or a cooperative hospital service organization described in **section 170(b)(1)(A)(iii)**.
- 4 A medical research organization operated in conjunction with a hospital described in **section 170(b)(1)(A)(iii)**. Enter the hospital's name, city, and state: _____
- 5 An organization operated for the benefit of a college or university owned or operated by a governmental unit described in **section 170(b)(1)(A)(iv)**. (Complete Part II.)
- 6 A federal, state, or local government or governmental unit described in **section 170(b)(1)(A)(v)**.
- 7 An organization that normally receives a substantial part of its support from a governmental unit or from the general public described in **section 170(b)(1)(A)(vi)**. (Complete Part II.)
- 8 A community trust described in **section 170(b)(1)(A)(vi)**. (Complete Part II.)
- 9 An organization that normally receives: (1) more than 33-1/3% of its support from contributions, membership fees, and gross receipts from activities related to its exempt functions – subject to certain exceptions, and (2) no more than 33-1/3% of its support from gross investment income and unrelated business taxable income (less section 511 tax) from businesses acquired by the organization after June 30, 1975. See **section 509(a)(2)**. (Complete Part III.)
- 10 An organization organized and operated exclusively to test for public safety. See **section 509(a)(4)**.
- 11 An organization organized and operated exclusively for the benefit of, to perform the functions of, or carry out the purposes of one or more publicly supported organizations described in section 509(a)(1) or section 509(a)(2). See **section 509(a)(3)**. Check the box that describes the type of supporting organization and complete lines 11e through 11h.
 - a Type I
 - b Type II
 - c Type III – Functionally integrated
 - d Type III – Other
- e By checking this box, I certify that the organization is not controlled directly or indirectly by one or more disqualified persons other than foundation managers and other than one or more publicly supported organizations described in section 509(a)(1) or section 509(a)(2).
- f If the organization received a written determination from the IRS that is a Type I, Type II or Type III supporting organization, check this box.
- g Since August 17, 2006, has the organization accepted any gift or contribution from any of the following persons?

	Yes	No
(i) A person who directly or indirectly controls, either alone or together with persons described in (ii) and (iii) below, the governing body of the supported organization?		
(ii) A family member of a person described in (i) above?		
(iii) A 35% controlled entity of a person described in (i) or (ii) above?		

h Provide the following information about the supported organization(s).

(i) Name of supported organization	(ii) EIN	(iii) Type of organization (described on lines 1-9 above or IRC section (see instructions))	(iv) Is the organization in column (i) listed in your governing document?		(v) Did you notify the organization in column (i) of your support?		(vi) Is the organization in column (i) organized in the U.S.?		(vii) Amount of support
			Yes	No	Yes	No	Yes	No	
(A)									
(B)									
(C)									
(D)									
(E)									
Total									

Part II Support Schedule for Organizations Described in Sections 170(b)(1)(A)(iv) and 170(b)(1)(A)(vi)

(Complete only if you checked the box on line 5, 7, or 8 of Part I or if the organization failed to qualify under Part III. If the organization fails to qualify under the tests listed below, please complete Part III.)

Section A. Public Support

Calendar year (or fiscal year beginning in) ▶	(a) 2007	(b) 2008	(c) 2009	(d) 2010	(e) 2011	(f) Total
1 Gifts, grants, contributions, and membership fees received. (Do not include any 'unusual grants'.)						
2 Tax revenues levied for the organization's benefit and either paid to or expended on its behalf.						
3 The value of services or facilities furnished by a governmental unit to the organization without charge.						
4 Total. Add lines 1 through 3.						
5 The portion of total contributions by each person (other than a governmental unit or publicly supported organization) included on line 1 that exceeds 2% of the amount shown on line 11, column (f).						
6 Public support. Subtract line 5 from line 4.						

Section B. Total Support

Calendar year (or fiscal year beginning in) ▶	(a) 2007	(b) 2008	(c) 2009	(d) 2010	(e) 2011	(f) Total
7 Amounts from line 4.						
8 Gross income from interest, dividends, payments received on securities loans, rents, royalties and income from similar sources.						
9 Net income from unrelated business activities, whether or not the business is regularly carried on.						
10 Other income. Do not include gain or loss from the sale of capital assets (Explain in Part IV.)						
11 Total support. Add lines 7 through 10.						
12 Gross receipts from related activities, etc (see instructions).					12	
13 First five years. If the Form 990 is for the organization's first, second, third, fourth, or fifth tax year as a section 501(c)(3) organization, check this box and stop here .						<input type="checkbox"/>

Section C. Computation of Public Support Percentage

14 Public support percentage for 2011 (line 6, column (f) divided by line 11, column (f)).	14	%
15 Public support percentage from 2010 Schedule A, Part II, line 14.	15	%
16a 33-1/3% support test – 2011. If the organization did not check the box on line 13, and the line 14 is 33-1/3% or more, check this box and stop here. The organization qualifies as a publicly supported organization.		<input type="checkbox"/>
b 33-1/3% support test – 2010. If the organization did not check a box on line 13 or 16a, and line 15 is 33-1/3% or more, check this box and stop here. The organization qualifies as a publicly supported organization.		<input type="checkbox"/>
17a 10%-facts-and-circumstances test – 2011. If the organization did not check a box on line 13, 16a, or 16b, and line 14 is 10% or more, and if the organization meets the 'facts-and-circumstances' test, check this box and stop here. Explain in Part IV how the organization meets the 'facts-and-circumstances' test. The organization qualifies as a publicly supported organization.		<input type="checkbox"/>
b 10%-facts-and-circumstances test – 2010. If the organization did not check a box on line 13, 16a, 16b, or 17a, and line 15 is 10% or more, and if the organization meets the 'facts-and-circumstances' test, check this box and stop here. Explain in Part IV how the organization meets the 'facts-and-circumstances' test. The organization qualifies as a publicly supported organization.		<input type="checkbox"/>
18 Private foundation. If the organization did not check a box on line 13, 16a, 16b, 17a, or 17b, check this box and see instructions.		<input type="checkbox"/>

Part III Support Schedule for Organizations Described in Section 509(a)(2)

(Complete only if you checked the box on line 9 of Part I or if the organization failed to qualify under Part II. If the organization fails to qualify under the tests listed below, please complete Part II.)

Section A. Public Support

Calendar year (or fiscal yr beginning in) ▶	(a) 2007	(b) 2008	(c) 2009	(d) 2010	(e) 2011	(f) Total
1 Gifts, grants, contributions and membership fees received. (Do not include any 'unusual grants'.)	129,822.	156,377.	172,109.	213,306.	234,835.	906,449.
2 Gross receipts from admissions, merchandise sold or services performed, or facilities furnished in any activity that is related to the organization's tax-exempt purpose.	23,087.	24,513.	28,141.	28,312.	68,323.	172,376.
3 Gross receipts from activities that are not an unrelated trade or business under section 513.						0.
4 Tax revenues levied for the organization's benefit and either paid to or expended on its behalf.						0.
5 The value of services or facilities furnished by a governmental unit to the organization without charge.						0.
6 Total. Add lines 1 through 5.	152,909.	180,890.	200,250.	241,618.	303,158.	1,078,825.
7a Amounts included on lines 1, 2, and 3 received from disqualified persons.	0.	0.	0.	0.	0.	0.
b Amounts included on lines 2 and 3 received from other than disqualified persons that exceed the greater of \$5,000 or 1% of the amount on line 13 for the year.	0.	0.	0.	0.	0.	0.
c Add lines 7a and 7b.	0.	0.	0.	0.	0.	0.
8 Public support (Subtract line 7c from line 6.)						1,078,825.

Section B. Total Support

Calendar year (or fiscal yr beginning in) ▶	(a) 2007	(b) 2008	(c) 2009	(d) 2010	(e) 2011	(f) Total
9 Amounts from line 6.	152,909.	180,890.	200,250.	241,618.	303,158.	1,078,825.
10a Gross income from interest, dividends, payments received on securities loans, rents, royalties and income from similar sources.						0.
b Unrelated business taxable income (less section 511 taxes) from businesses acquired after June 30, 1975.						0.
c Add lines 10a and 10b.	0.	0.	0.	0.	0.	0.
11 Net income from unrelated business activities not included in line 10b, whether or not the business is regularly carried on.						0.
12 Other income. Do not include gain or loss from the sale of capital assets (Explain in Part IV.)						0.
13 Total support. (Add lns 9, 10c, 11, and 12.)	152,909.	180,890.	200,250.	241,618.	303,158.	1,078,825.

14 First five years. If the Form 990 is for the organization's first, second, third, fourth, or fifth tax year as a section 501(c)(3) organization, check this box and **stop here**.

Section C. Computation of Public Support Percentage

15 Public support percentage for 2011 (line 8, column (f) divided by line 13, column (f)).	15	100.00 %
16 Public support percentage from 2010 Schedule A, Part III, line 15.	16	100.00 %

Section D. Computation of Investment Income Percentage

17 Investment income percentage for 2011 (line 10c, column (f) divided by line 13, column (f)).	17	0.00 %
18 Investment income percentage from 2010 Schedule A, Part III, line 17.	18	0.00 %

19a 33-1/3% support tests – 2011. If the organization did not check the box on line 14, and line 15 is more than 33-1/3%, and line 17 is not more than 33-1/3%, check this box and **stop here.** The organization qualifies as a publicly supported organization.

b 33-1/3% support tests – 2010. If the organization did not check a box on line 14 or line 19a, and line 16 is more than 33-1/3%, and line 18 is not more than 33-1/3%, check this box and **stop here.** The organization qualifies as a publicly supported organization.

20 Private foundation. If the organization did not check a box on line 14, 19a, or 19b, check this box and see instructions.

Schedule B
(Form 990, 990-EZ,
or 990-PF)

Department of the Treasury
Internal Revenue Service

Schedule of Contributors

▶ **Attach to Form 990, Form 990-EZ, or Form 990-PF**

OMB No. 1545-0047

2011

Name of the organization

MUSICAL BRIDGES AROUND THE WORLD, INC.

Employer identification number

74-2891493

Organization type (check one):

Filers of:

Form 990 or 990-EZ

Section:

501(c)(3) (enter number) organization

4947(a)(1) nonexempt charitable trust **not** treated as a private foundation

527 political organization

Form 990-PF

501(c)(3) exempt private foundation

4947(a)(1) nonexempt charitable trust treated as a private foundation

501(c)(3) taxable private foundation

Check if your organization is covered by the **General Rule** or a **Special Rule**.

Note. Only a section 501(c)(7), (8), or (10) organization can check boxes for both the General Rule and a Special Rule. See instructions.

General Rule

For an organization filing Form 990, 990-EZ, or 990-PF that received, during the year, \$5,000 or more (in money or property) from any one contributor. (Complete Parts I and II.)

Special Rules

For a section 501(c)(3) organization filing Form 990 or 990-EZ that met the 33-1/3% support test of the regulations under sections 509(a)(1) and 170(b)(1)(A)(vi), and received from any one contributor, during the year, a contribution of the greater of (1) \$5,000 or (2) 2% of the amount on (i) Form 990, Part VIII, line 1h or (ii) Form 990-EZ, line 1. Complete Parts I and II.

For a section 501(c)(7), (8), or (10) organization filing Form 990 or 990-EZ that received from any one contributor, during the year, total contributions of more than \$1,000 for use *exclusively* for religious, charitable, scientific, literary, or educational purposes, or the prevention of cruelty to children or animals. Complete Parts I, II, and III.

For a section 501(c)(7), (8), or (10) organization filing Form 990 or 990-EZ that received from any one contributor, during the year, contributions for use *exclusively* for religious, charitable, etc, purposes, but these contributions did not total to more than \$1,000. If this box is checked, enter here the total contributions that were received during the year for an *exclusively* religious, charitable, etc, purpose. Do not complete any of the parts unless the **General Rule** applies to this organization because it received nonexclusively religious, charitable, etc, contributions of \$5,000 or more during the year. ▶ \$ _____

Caution: An organization that is not covered by the General Rule and/or the Special Rules does not file Schedule B (Form 990, 990-EZ, or 990-PF) but it **must** answer 'No' on Part IV, line 2, of its Form 990; or check the box on line H of its Form 990-EZ or on Part I, line 2, of its Form 990-PF, to certify that it does not meet the filing requirements of Schedule B (Form 990, 990-EZ, or 990-PF).

BAA For Paperwork Reduction Act Notice, see the Instructions for Form 990, 990EZ, or 990-PF.

Schedule B (Form 990, 990-EZ, or 990-PF) (2011)

Name of organization

Employer identification number

MUSICAL BRIDGES AROUND THE WORLD, INC.

74-2891493

Part I Contributors (see instructions). Use duplicate copies of Part I if additional space is needed.

(a) Number	(b) Name, address, and ZIP + 4	(c) Total contributions	(d) Type of contribution
1	SAN ANTONIO OFFICE OF CULTURAL 318 W. HOUSTON, SUITE 301 SAN ANTONIO, TX 78205	\$ 50,000.	Person <input checked="" type="checkbox"/> Payroll <input type="checkbox"/> Noncash <input type="checkbox"/> (Complete Part II if there is a noncash contribution.)
2	RUSSELL HILL ROGERS FUND FOR ARTS 112 EAST PECAN ST, STE 1800 SAN ANTONIO, TX 78205	\$ 10,000.	Person <input checked="" type="checkbox"/> Payroll <input type="checkbox"/> Noncash <input type="checkbox"/> (Complete Part II if there is a noncash contribution.)
3	VALERO ENERGY FOUNDATION ONE VALERO WAY SAN ANTONIO, TX 78219-1112	\$ 7,500.	Person <input checked="" type="checkbox"/> Payroll <input type="checkbox"/> Noncash <input type="checkbox"/> (Complete Part II if there is a noncash contribution.)
4	JEFFERSON CRABB LAW OFFICE 3019 W. ALBERTA ROAD EDINBURG, TX 78539-3118	\$ 10,000.	Person <input checked="" type="checkbox"/> Payroll <input type="checkbox"/> Noncash <input type="checkbox"/> (Complete Part II if there is a noncash contribution.)
5	TEXAS COMMISSION OF ARTS P.O. BOX 13406 AUSTIN, TX 78711-3406	\$ 8,000.	Person <input checked="" type="checkbox"/> Payroll <input type="checkbox"/> Noncash <input type="checkbox"/> (Complete Part II if there is a noncash contribution.)
6	CENTRAL TEXAS PAIN CENTER 213 HUNTERS VILLAGE NEW BRAUNFELS, TX 78132	\$ 10,000.	Person <input checked="" type="checkbox"/> Payroll <input type="checkbox"/> Noncash <input type="checkbox"/> (Complete Part II if there is a noncash contribution.)

Name of organization MUSICAL BRIDGES AROUND THE WORLD, INC.	Employer identification number 74-2891493
---	---

Part I Contributors (see instructions). Use duplicate copies of Part I if additional space is needed.

(a) Number	(b) Name, address, and ZIP + 4	(c) Total contributions	(d) Type of contribution
7	ELISABETH HUTH COATS CHARITABLE FND ----- 1177 NE LOOP 410 ----- SAN ANTONIO, TX 78209 -----	\$ 15,000.	Person <input checked="" type="checkbox"/> Payroll <input type="checkbox"/> Noncash <input type="checkbox"/> (Complete Part II if there is a noncash contribution.)
8	KRONKOWSKY CHARITABLE TRUST ----- 112 EAST PECAN STE 830 ----- SAN ANTONIO, TX 78205 -----	\$ 10,000.	Person <input checked="" type="checkbox"/> Payroll <input type="checkbox"/> Noncash <input type="checkbox"/> (Complete Part II if there is a noncash contribution.)
9	SAN ANTONIO AREA FOUNDATION ----- 303 PEARL PRKWAY STE 114 ----- SAN ANTONIO, TX 78215 -----	\$ 15,000.	Person <input checked="" type="checkbox"/> Payroll <input type="checkbox"/> Noncash <input type="checkbox"/> (Complete Part II if there is a noncash contribution.)
10	ROCK GIVES BACK/RACKSPACE HOSTING ----- 5000 WALZEM RD ----- SAN ANTONIO, TX 78218 -----	\$ 5,000.	Person <input checked="" type="checkbox"/> Payroll <input type="checkbox"/> Noncash <input type="checkbox"/> (Complete Part II if there is a noncash contribution.)
---	----- ----- ----- -----	\$ -----	Person <input type="checkbox"/> Payroll <input type="checkbox"/> Noncash <input type="checkbox"/> (Complete Part II if there is a noncash contribution.)
---	----- ----- ----- -----	\$ -----	Person <input type="checkbox"/> Payroll <input type="checkbox"/> Noncash <input type="checkbox"/> (Complete Part II if there is a noncash contribution.)

COPY

Name of organization: MUSICAL BRIDGES AROUND THE WORLD, INC. Employer identification number: 74-2891493

Part III Exclusively religious, charitable, etc., individual contributions to section 501(c)(7), (8), or (10) organizations that total more than \$1,000 for the year. Complete cols (a) through (e) and the following line entry.

For organizations completing Part III, enter total of *exclusively* religious, charitable, etc., contributions of **\$1,000 or less** for the year. (Enter this information once. See instructions.) ▶ \$ _____ N/A
Use duplicate copies of Part III if additional space is needed.

(a) No. from Part I	(b) Purpose of gift	(c) Use of gift	(d) Description of how gift is held
	N/A		

(e) Transfer of gift	
Transferee's name, address, and ZIP + 4	Relationship of transferor to transferee

(a) No. from Part I	(b) Purpose of gift	(c) Use of gift	(d) Description of how gift is held

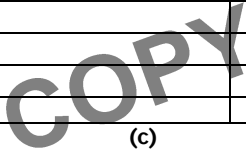
(e) Transfer of gift	
Transferee's name, address, and ZIP + 4	Relationship of transferor to transferee

(a) No. from Part I	(b) Purpose of gift	(c) Use of gift	(d) Description of how gift is held

(e) Transfer of gift	
Transferee's name, address, and ZIP + 4	Relationship of transferor to transferee

(a) No. from Part I	(b) Purpose of gift	(c) Use of gift	(d) Description of how gift is held

(e) Transfer of gift	
Transferee's name, address, and ZIP + 4	Relationship of transferor to transferee



**SCHEDULE D
(Form 990)**

Department of the Treasury
Internal Revenue Service

Supplemental Financial Statements

▶ **Complete if the organization answered 'Yes,' to Form 990, Part IV, lines 6, 7, 8, 9, 10, 11a, 11b, 11c, 11d, 11e, 11f, 12a, or 12b.**
▶ **Attach to Form 990.** ▶ **See separate instructions.**

OMB No. 1545-0047

2011

Open to Public Inspection

Name of the organization

Employer identification number

MUSICAL BRIDGES AROUND THE WORLD, INC.

74-2891493

Part I Organizations Maintaining Donor Advised Funds or Other Similar Funds or Accounts. Complete if the organization answered 'Yes' to Form 990, Part IV, line 6.

	(a) Donor advised funds	(b) Funds and other accounts
1 Total number at end of year.....		
2 Aggregate contributions to (during year).....		
3 Aggregate grants from (during year).....		
4 Aggregate value at end of year.....		
5 Did the organization inform all donors and donor advisors in writing that the assets held in donor advised funds are the organization's property, subject to the organization's exclusive legal control?.....	<input type="checkbox"/> Yes	<input type="checkbox"/> No
6 Did the organization inform all grantees, donors, and donor advisors in writing that grant funds can be used only for charitable purposes and not for the benefit of the donor or donor advisor, or for any other purpose conferring impermissible private benefit?.....	<input type="checkbox"/> Yes	<input type="checkbox"/> No

Part II Conservation Easements. Complete if the organization answered 'Yes' to Form 990, Part IV, line 7.

1 Purpose(s) of conservation easements held by the organization (check all that apply).

<input type="checkbox"/> Preservation of land for public use (e.g., recreation or education)	<input type="checkbox"/> Preservation of an historically important land area
<input type="checkbox"/> Protection of natural habitat	<input type="checkbox"/> Preservation of a certified historic structure
<input type="checkbox"/> Preservation of open space	

2 Complete lines 2a through 2d if the organization held a qualified conservation contribution in the form of a conservation easement on the last day of the tax year.

	Held at the End of the Tax Year
a Total number of conservation easements.....	2a
b Total acreage restricted by conservation easements.....	2b
c Number of conservation easements on a certified historic structure included in (a).....	2c
d Number of conservation easements included in (c) acquired after 8/17/06, and not on a historic structure listed in the National Register.....	2d

3 Number of conservation easements modified, transferred, released, extinguished, or terminated by the organization during the tax year ▶ _____

4 Number of states where property subject to conservation easement is located ▶ _____

5 Does the organization have a written policy regarding the periodic monitoring, inspection, handling of violations, and enforcement of the conservation easements it holds?..... Yes No

6 Staff and volunteer hours devoted to monitoring, inspecting, and enforcing conservation easements during the year ▶ _____

7 Amount of expenses incurred in monitoring, inspecting, and enforcing conservation easements during the year ▶ \$ _____

8 Does each conservation easement reported on line 2(d) above satisfy the requirements of section 170(h)(4)(B)(i) and section 170(h)(4)(B)(ii)?..... Yes No

9 In Part XIV, describe how the organization reports conservation easements in its revenue and expense statement, and balance sheet, and include, if applicable, the text of the footnote to the organization's financial statements that describes the organization's accounting for conservation easements.

Part III Organizations Maintaining Collections of Art, Historical Treasures, or Other Similar Assets.

Complete if the organization answered 'Yes' to Form 990, Part IV, line 8.

1 a If the organization elected, as permitted under SFAS 116 (ASC 958), not to report in its revenue statement and balance sheet works of art, historical treasures, or other similar assets held for public exhibition, education, or research in furtherance of public service, provide, in Part XIV, the text of the footnote to its financial statements that describes these items.

b If the organization elected, as permitted under SFAS 116 (ASC 958), to report in its revenue statement and balance sheet works of art, historical treasures, or other similar assets held for public exhibition, education, or research in furtherance of public service, provide the following amounts relating to these items:

(i) Revenues included in Form 990, Part VIII, line 1..... ▶ \$ _____

(ii) Assets included in Form 990, Part X..... ▶ \$ _____

2 If the organization received or held works of art, historical treasures, or other similar assets for financial gain, provide the following amounts required to be reported under SFAS 116 (ASC 958) relating to these items:

a Revenues included in Form 990, Part VIII, line 1..... ▶ \$ _____

b Assets included in Form 990, Part X..... ▶ \$ _____

Part III Organizations Maintaining Collections of Art, Historical Treasures, or Other Similar Assets (continued)

3 Using the organization's acquisition, accession, and other records, check any of the following that are a significant use of its collection items (check all that apply):

- a Public exhibition
- b Scholarly research
- c Preservation for future generations
- d Loan or exchange programs
- e Other _____

4 Provide a description of the organization's collections and explain how they further the organization's exempt purpose in Part XIV.

5 During the year, did the organization solicit or receive donations of art, historical treasures, or other similar assets to be sold to raise funds rather than to be maintained as part of the organization's collection? Yes No

Part IV Escrow and Custodial Arrangements. Complete if the organization answered 'Yes' to Form 990, Part IV, line 9, or reported an amount on Form 990, Part X, line 21.

1 a Is the organization an agent, trustee, custodian, or other intermediary for contributions or other assets not included on Form 990, Part X? Yes No

b If 'Yes,' explain the arrangement in Part XIV and complete the following table:

	Amount
c Beginning balance	1c
d Additions during the year	1d
e Distributions during the year	1e
f Ending balance	1f

2 a Did the organization include an amount on Form 990, Part X, line 21? Yes No

b If 'Yes,' explain the arrangement in Part XIV.

Part V Endowment Funds. Complete if the organization answered 'Yes' to Form 990, Part IV, line 10.

	(a) Current year	(b) Prior year	(c) Two years back	(d) Three years back	(e) Four years back
1 a Beginning of year balance					
b Contributions					
c Net investment earnings, gains, and losses					
d Grants or scholarships					
e Other expenditures for facilities and programs					
f Administrative expenses					
g End of year balance					

2 Provide the estimated percentage of the current year end balance (line 1g, column (a)) held as:

- a Board designated or quasi-endowment %
- b Permanent endowment %
- c Temporarily restricted endowment %

The percentages in lines 2a, 2b, and 2c should equal 100%.

3 a Are there endowment funds not in the possession of the organization that are held and administered for the organization by:

	Yes	No
(i) unrelated organizations	3a(i)	
(ii) related organizations	3a(ii)	
b If 'Yes' to 3a(ii), are the related organizations listed as required on Schedule R?	3b	

4 Describe in Part XIV the intended uses of the organization's endowment funds.

Part VI Land, Buildings, and Equipment. See Form 990, Part X, line 10.

Description of property	(a) Cost or other basis (investment)	(b) Cost or other basis (other)	(c) Accumulated depreciation	(d) Book value
1 a Land				
b Buildings				
c Leasehold improvements				
d Equipment		20,770.	15,251.	5,519.
e Other				
Total. Add lines 1a through 1e. (Column (d) must equal Form 990, Part X, column (B), line 10(c).)				5,519.

Part VII Investments – Other Securities. See Form 990, Part X, line 12. N/A

(a) Description of security or category (including name of security)	(b) Book value	(c) Method of valuation: Cost or end-of-year market value
(1) Financial derivatives		
(2) Closely-held equity interests		
(3) Other		
(A) -----		
(B) -----		
(C) -----		
(D) -----		
(E) -----		
(F) -----		
(G) -----		
(H) -----		
(I) -----		
Total. (Column (b) must equal Form 990 Part X, column (B) line 12.)		

Part VIII Investments – Program Related. See Form 990, Part X, line 13. N/A

(a) Description of investment type	(b) Book value	(c) Method of valuation: Cost or end-of-year market value
(1)		
(2)		
(3)		
(4)		
(5)		
(6)		
(7)		
(8)		
(9)		
(10)		
Total. (Column (b) must equal Form 990, Part X, column (B) line 13.)		

Part IX Other Assets. See Form 990, Part X, line 15. N/A

(a) Description	(b) Book value
(1)	
(2)	
(3)	
(4)	
(5)	
(6)	
(7)	
(8)	
(9)	
(10)	
Total. (Column (b) must equal Form 990, Part X, column (B), line 15.)	

Part X Other Liabilities. See Form 990, Part X, line 25.

(a) Description of liability	(b) Book value
(1) Federal income taxes	
(2)	
(3)	
(4)	
(5)	
(6)	
(7)	
(8)	
(9)	
(10)	
(11)	
Total. (Column (b) must equal Form 990, Part X, column (B) line 25.)	

2 FIN 48 (ASC 740) Footnote. In Part XIV, provide the text of the footnote to the organization's financial statements that reports the organization's liability for uncertain tax positions under FIN 48 (ASC 740).

Part XI Reconciliation of Change in Net Assets from Form 990 to Audited Financial Statements	
1 Total revenue (Form 990, Part VIII, column (A), line 12)	303,158.
2 Total expenses (Form 990, Part IX, column (A), line 25)	281,808.
3 Excess or (deficit) for the year. Subtract line 2 from line 1	21,350.
4 Net unrealized gains (losses) on investments	
5 Donated services and use of facilities	
6 Investment expenses	
7 Prior period adjustments	
8 Other (Describe in Part XIV.)	
9 Total adjustments (net). Add lines 4 through 8	
10 Excess or (deficit) for the year per audited financial statements. Combine lines 3 and 9	21,350.

Part XII Reconciliation of Revenue per Audited Financial Statements With Revenue per Return	
1 Total revenue, gains, and other support per audited financial statements	1 417,300.
2 Amounts included on line 1 but not on Form 990, Part VIII, line 12:	
a Net unrealized gains on investments	2a
b Donated services and use of facilities	2b 114,142.
c Recoveries of prior year grants	2c
d Other (Describe in Part XIV.)	2d
e Add lines 2a through 2d	2e 114,142.
3 Subtract line 2e from line 1	3 303,158.
4 Amounts included on Form 990, Part VIII, line 12, but not on line 1:	
a Investment expenses not included on Form 990, Part VIII, line 7b	4a
b Other (Describe in Part XIV.)	4b
c Add lines 4a and 4b	4c
5 Total revenue. Add lines 3 and 4c. (This must equal Form 990, Part I, line 12.)	5 303,158.

Part XIII Reconciliation of Expenses per Audited Financial Statements With Expenses per Return	
1 Total expenses and losses per audited financial statements	1 395,950.
2 Amounts included on line 1 but not on Form 990, Part IX, line 25:	
a Donated services and use of facilities	2a 114,142.
b Prior year adjustments	2b
c Other losses	2c
d Other (Describe in Part XIV.)	2d
e Add lines 2a through 2d	2e 114,142.
3 Subtract line 2e from line 1	3 281,808.
4 Amounts included on Form 990, Part IX, line 25, but not on line 1:	
a Investment expenses not included on Form 990, Part VIII, line 7b	4a
b Other (Describe in Part XIV.)	4b
c Add lines 4a and 4b	4c
5 Total expenses. Add lines 3 and 4c. (This must equal Form 990, Part I, line 18.)	5 281,808.

Part XIV Supplemental Information

Complete this part to provide the descriptions required for Part II, lines 3, 5, and 9; Part III, lines 1a and 4; Part IV, lines 1b and 2b; Part V, line 4; Part X, line 2; Part XI, line 8; Part XII, lines 2d and 4b; and Part XIII, lines 2d and 4b. Also complete this part to provide any additional information.

Part XIV Supplemental Information *(continued)*

COPY

SCHEDULE O
(Form 990 or 990-EZ)

Supplemental Information to Form 990 or 990-EZ

OMB No. 1545-0047

2011

**Open to Public
Inspection**

Department of the Treasury
Internal Revenue Service

Complete to provide information for responses to specific questions on
Form 990 or 990-EZ or to provide any additional information.
▶ Attach to Form 990 or 990-EZ.

Name of the organization

MUSICAL BRIDGES AROUND THE WORLD, INC.

Employer identification number

74-2891493

FORM 990, PART VI, LINE 6 - EXPLANATION OF CLASSES OF MEMBERS OR SHAREHOLDER

MEMBERSHIP TO THE ORGANIZATION ENTITLES MEMBERS TO DISCOUNTED CONCERT TICKETS AND
SIMILAR BENEFITS. MEMBERS ARE NON-VOTING WITH RESPECT TO MANAGEMENT OF THE
ORGANIZATION.

FORM 990, PART VI, LINE 8 - EXPLANATION OF NO CONTEMPORANEOUSLY DOCUMENTATION OF MEETINGS

COMMITTEES ARE ADVISORY AND SUBSTANTIALLY ALL DECISIONS ARE MADE BY THE FULL BOARD.

FORM 990, PART VI, LINE 11B - FORM 990 REVIEW PROCESS

A COPY OF THE RETURN IS DISTRIBUTED TO ALL BOARD MEMBERS AND REVIEWED BY THE
EXECUTIVE COMMITTEE OF THE BOARD BEFORE FILING.

FORM 990, PART VI, LINE 12C - EXPLANATION OF MONITORING AND ENFORCEMENT OF CONFLICTS

NEW BOARD MEMBERS ARE PROVIDED COPIES OF THE BYLAWS AND WRITTEN POLICIES. ANY
SUSPECTED OR POTENTIAL CONFLICTS ARE RESOLVED BY THE BOARD.

FORM 990, PART VI, LINE 15A - COMPENSATION REVIEW & APPROVAL PROCESS FOR CEO, EXEC. DIR., OR TOP MG

BOARD OF DIRECTORS REVIEWS AND ESTABLISHES COMPENSATION FOR THE ARTISTIC DIRECTOR.

FORM 990, PART VI, LINE 19 - OTHER ORGANIZATION DOCUMENTS PUBLICLY AVAILABLE

NO DOCUMENTS AVAILABLE TO THE PUBLIC.

CLIENT 17

MUSICAL BRIDGES AROUND THE WORLD, INC.

74-2891493

5/08/13

03:00PM

FORM 990, PART IX, LINE 24E
OTHER EXPENSES

	(A)	(B)	(C)	(D)
	TOTAL	PROGRAM SERVICES	MANAGEMENT & GENERAL	FUNDRAISING
AUTO	620.	620.		
BANK CHARGES	125.		125.	
CREDIT CARD FEES	787.		787.	
DEVELOPMENT CONSULTANT	1,400.			1,400.
DUES AND SUBSCRIPTIONS	260.		260.	
FLOWERS	384.	384.		
FOOD	1,446.	1,446.		
GRAPHIC DESIGNER	7,225.	4,490.	2,735.	
MARKETING CONSULTANT	5,002.	4,002.		1,000.
MUSIC EXPENSE	376.	376.		
PHOTOGRAPHER	1,000.	1,000.		
PIANO EXPENSE	7,355.	7,355.		
POSTAGE AND SHIPPING	3,690.	3,000.	690.	
PRINTING AND PUBLICATIONS	281.		281.	
RENTAL	2,813.	2,813.		
TELEPHONE	3,745.		3,745.	
VIDEO PRODUCTION	400.	400.		
WEBSITE COST	936.		936.	
WEBSITE DESIGNER	4,041.	4,041.		
TOTAL	\$ 41,886.	\$ 29,927.	\$ 9,559.	\$ 2,400.

COPY